

Step-by-Step Assembly Instructions for the 3-D Starfish Bevel Cluster (Item #2231)

Delphi makes it easy to be creative. This quick visual manual will show you how use the cardboard form that comes with your 3-D Starfish bevel cluster. Make sure to have some masking or electrical tape handy.



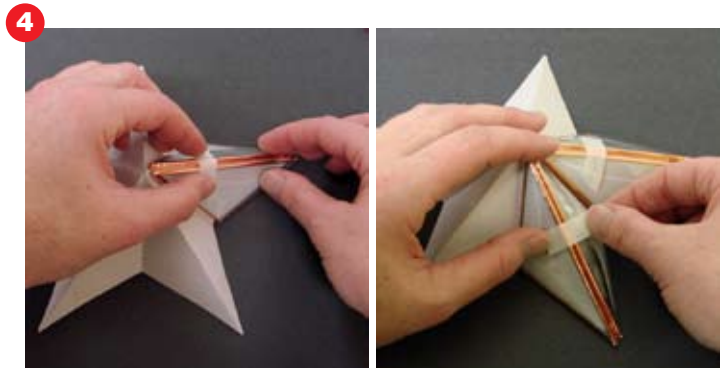
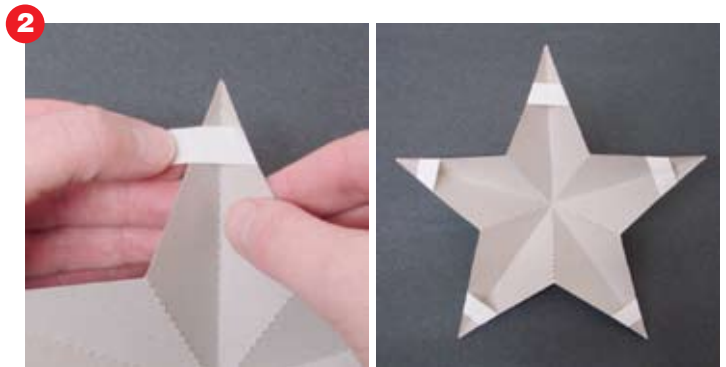
Step 1: Fold on the perforations. The long center lines will fold up and the shorter lines will fold down.

Step 2: Tape the backside of each point with a small piece of tape so the template will keep its shape.

Step 3: Foil bevels and burnish. For our project we used silver backed copper foil (item #5571).

Step 4: Center the foiled bevels onto the template in pairs, tape to hold in secure. Continue until all bevels are in place.

Step 5: Tape all sections together; making sure that project is level. Adjust tape as needed. Tack solder, remove tape and solder. Lift star from form and solder the backside. Finish as desired.



DelphiGlass.com • info@delphiglass.com
To Order **800-248-2048**
Project Help Line **800-821-9450**
© Copyright 2009 Delphi Creativity Group.