



GLASSLINE

IMPORTANT PRODUCT INFORMATION:

Glassline Paper needs to be kept a minimum of 1/4" from the outside edge of the glass. If the paper is too close to the edge, the glass will not seal properly and or the paper may crinkle.

A spacer between the sheets of glass is a must. Use 1/8" long pieces of 2 mm clear stringer, placing one each in the very corner of the glass. This works well for pieces 8" x 8" or smaller. If stringers are not available, a large piece of frit in each corner will work also. For larger sizes increase the amount of stringer spacers accordingly. For pieces up to 14" x 20" use up to twelve 1/8" stringers placed along the very edge of the piece. This spacing allows the release of gases before the glass fuses. If this spacing is not used or the firing is too fast, carbon will be trapped between the layers of glass, causing a smoky grey color and/or large air bubbles.

Glassline Paper sheets may be glued to the glass or to each other. I have had good results using Elmer's School Glue Sticks or Elmer's White Glue. A little dot in the center of the paper works better than gluing the corners. Use as little as possible, the object is to just hold the paper in place until the glass melts. Any glue residue left on the glass must be cleaned, or else you will see the residue once the piece is fired. Be careful when handling the sheets of paper, excessive bending of the paper may cause the color to flake off.

A sample firing schedule is listed below. This works well for pieces 2 sheets thick up to 10" x 10". If doing larger pieces adjusting the "burn out time" at 1000 degrees is essential. For pieces up 14" x 20" I suggest a hold at 1000 degrees for 8 hours. Annealing times must also be adjusted for size and thickness.

Sample Small Piece Firing

Segment	Rate	Temp.	Hold
1	250	1000	4.00 hours
2	250	1470	15 minutes
3	9999	960	1.00 hour
4	250	200	none

Glassline Paper comes in a wide variety of kits, from 5"x5" kits up to 10"x10" kits

GPK50 This kit contains one 10"x10" sheet each of Aqua, Canary, Caribbean, Coral, Cranberry, Evergreen, Flamingo, Graphite, Honey, Iris, Jade, Pewter, Sapphire, Tangerine, and Walnut. Please specify style in either Splatter, Plain, Crinkle, Granite, Sandstone, or Marble. Steel Blue replaces Graphite in the Granite, Sandstone, and Marble styles.

GPK51 This kit contains six 10"x10" sheets of paper, one each of any one color and style. Please specify color and style, all six sheets must be the same color and style.

GPK52 This kit contains fifteen 5"x5" sheets of paper, one each of five colors Caribbean, Evergreen, Iris, Jade, and Sapphire in three styles splatter, plain, and crinkle.

GPK53 This kit contains fifteen 5"x5" sheets of paper, one each of five colors Canary, Coral, Cranberry, Flamingo, and Tangerine in three styles splatter, plain, and crinkle.

GPK54 This kit contains fifteen 5"x5" sheets of paper, one each of five colors Aqua, Graphite, Honey, Pewter, and Walnut in three styles splatter, plain, and crinkle.

GPK55 This kit contains fifteen 5"x5" sheets of paper, one each of five colors Emerald, Peacock, Suede, Violet, and Wisteria in three styles splatter, plain, and crinkle.

GPK80 This kit contains fifteen 5"x5" sheets of paper, one each of five colors Caribbean, Evergreen, Iris, Jade, and Sapphire in three styles granite, sandstone, and marble.

GPK81 This kit contains fifteen 5"x5" sheets of paper, one each of five colors Canary, Coral, Cranberry, Flamingo, and Tangerine in three styles granite, sandstone, and marble.

GPK82 This kit contains fifteen 5"x5" sheets of paper, one each of five colors Aqua, Steel Blue, Honey, Pewter, and Walnut in three styles granite, sandstone, and marble.

GPK83 This kit contains fifteen 5"x5" sheets of paper, one each of five colors Emerald, Peacock, Suede, Violet, and Wisteria in three styles granite, sandstone, and marble.

GPK77 This kit contains fifteen 10"x10" sheets of paper, one each of five colors Caribbean, Evergreen, Iris, Jade, and Sapphire. In three styles splatter, plain, and crinkle.

GPK78 This kit contains fifteen 10"x10" sheets of paper, one each of five colors Canary, Coral, Cranberry, Flamingo, and Tangerine in three styles splatter, plain, and crinkle.

GPK79 This kit contains fifteen 10"x10" sheets of paper, one each of five colors Aqua, Graphite, Honey, Pewter, and Walnut in three styles splatter, plain, and crinkle.

GPK84 This kit contains fifteen 10"x10" sheets of paper, one each of five colors Emerald, Peacock, Suede, Violet, and Wisteria in three styles splatter, plain, and crinkle.

GPK85 This kit contains fifteen 10"x10" sheets of paper, one each of five colors Caribbean, Evergreen, Iris, Jade, and Sapphire in three styles granite, sandstone, and marble.

GPK86 This kit contains fifteen 10"x10" sheets of paper, one each of five colors Canary, Coral, Cranberry, Flamingo, and Tangerine in three styles granite, sandstone, and marble.

GPK87 This kit contains fifteen 10"x10" sheets of paper, one each of five colors Aqua, Steel Blue, Honey, Pewter, and Walnut in three styles granite, sandstone, and marble.

GPK88 This kit contains fifteen 10"x10" sheets of paper, one each of five colors Emerald, Peacock, Suede, Violet, and Wisteria in three styles granite, sandstone, and marble.

GLASSLINE 1-800-952-8030

A division of Clay Art Center Fax 253-922-5342

2636 Pioneer Way East www.clayartcenter.net



GLASSLINE

PAPER



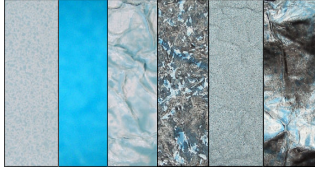
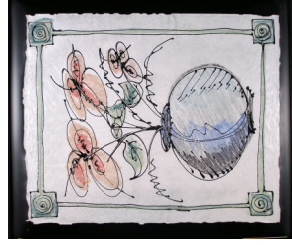
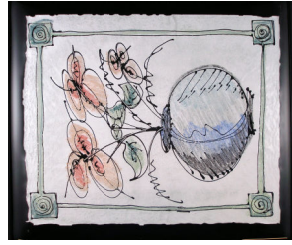
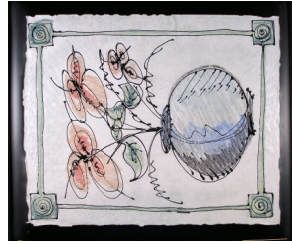
GLASSLINE PAPER

Glassline Paper is fusible colored paper that is designed to be fired between layers of glass. It may be used with any COE of glass. The Glassline Paper can be cut with scissors, a razor knife or simply torn to achieve a ragged edge. Intricate designs are easy to achieve with this product.

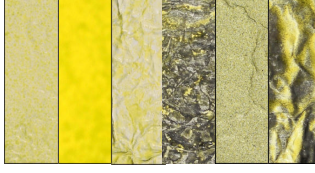
Glassline Paper is available in twenty one different colors. Each color comes in six distinct styles: plain, splatter, crinkle, granite, sandstone, and marble. (Graphite only comes in the splatter, solid, and crinkle style.) Use these different colors and styles to achieve a multitude of shapes, designs, and textures.

All colors of Glassline Paper are sold as individual color packages. The package comes with three sheets of Glassline Paper in either the splatter, plain, and crinkle style or the granite, sandstone, and marble style. These packages are available in either 5"x5" or 10"x10" sizes. Glassline Paper comes in a variety of kits, please see the back page of this flyer for a complete list.

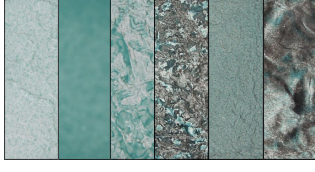
Glassline Pens may be used in conjunction with the Glassline Paper for highlights and outlining. The pens may be used to draw directly on the paper and or draw on the sheet of glass that is covering the paper.



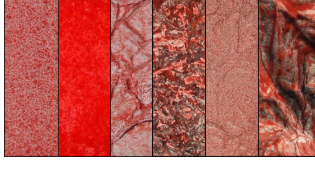
AQUA
Splatter
Plain
Crinkle
Granite
Sandstone
Marble



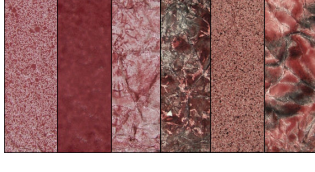
CANARY
Splatter
Plain
Crinkle
Granite
Sandstone
Marble



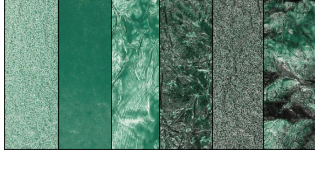
CARIBBEAN
Splatter
Plain
Crinkle
Granite
Sandstone
Marble



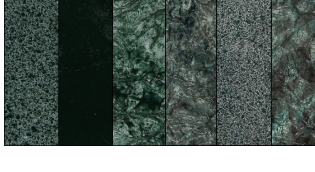
CORAL
Splatter
Plain
Crinkle
Granite
Sandstone
Marble



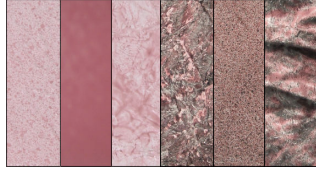
CRANBERRY
Splatter
Plain
Crinkle
Granite
Sandstone
Marble



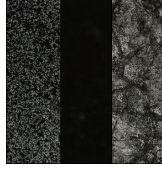
EMERALD
Splatter
Plain
Crinkle
Granite
Sandstone
Marble



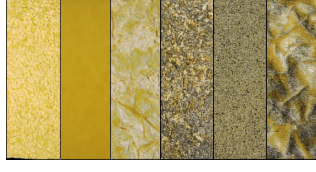
EVERGREEN
Splatter
Plain
Crinkle
Granite
Sandstone
Marble



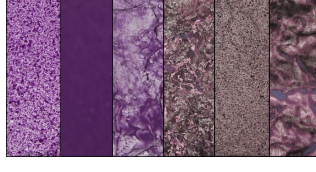
FLAMINGO
Splatter
Plain
Crinkle
Granite
Sandstone



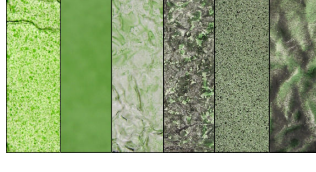
GRAPHITE
Splatter
Plain
Crinkle



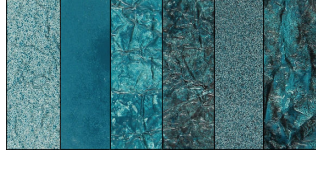
HONEY
Splatter
Plain
Crinkle
Granite
Sandstone
Marble



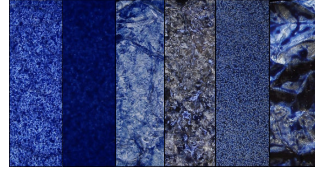
IRIS
Splatter
Plain
Crinkle
Granite
Sandstone
Marble



JADE
Splatter
Plain
Crinkle
Granite
Sandstone
Marble



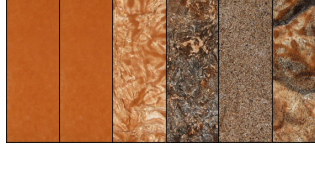
PEACOCK
Splatter
Plain
Crinkle
Granite
Sandstone
Marble



SAPPHIRE
Splatter
Plain
Crinkle
Granite
Sandstone
Marble



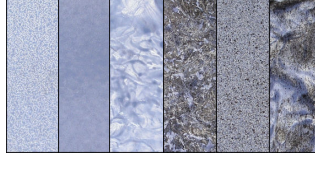
STEEL BLUE
Splatter
Plain
Crinkle
Granite
Sandstone
Marble



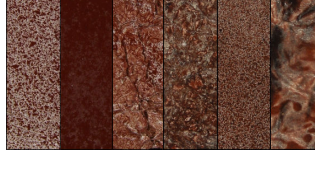
SUEDE
Splatter
Plain
Crinkle
Granite
Sandstone
Marble



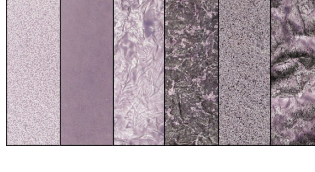
TANGERINE
Splatter
Plain
Crinkle
Granite
Sandstone
Marble



VIOLET
Splatter
Plain
Crinkle
Granite
Sandstone
Marble



WALNUT
Splatter
Plain
Crinkle
Granite
Sandstone
Marble



WISTERIA
Splatter
Plain
Crinkle
Granite
Sandstone
Marble