



Frit Picture Mold Instructions

Frit Picture Mold Butterfly Tile created at The Mad Potter, Lexington, KY by Kim Knight

Materials needed:

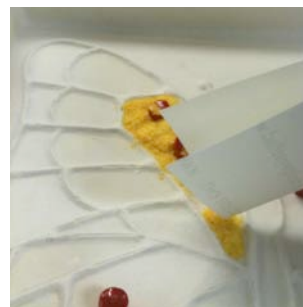
Butterfly Frit Picture Mold 6" Tile Mold; Mold E-Z; Red Opal Rod, 8 dots; Yellow Opal Rod, 2 dots
 Black Opal Rod, 1 dot; Spectrum System 96; Uroboros Opal Red Fine Frit; Uroboros Opal; range Fine Frit;
 Uroboros Opal Yellow Fine Frit; Uroboros Opal Black Fine Frit; Uroboros Clear Medium Frit; 6" x 6" White
 Opal Sheet Glass; 4" x 4" White Opal Sheet Glass; 1.5" x 1.5" White Opal Sheet Glass; Spectrum System 96;
 Small piece of paper approx 3" x 3"; Spoon small soft round brush; Tweezers; Black Glassline.



1. Start with a Frit Picture Mold. Follow instructions on Mold E-Z to coat the mold, to keep the glass from sticking.
2. While the Mold is drying, nip your rod dots.



3. Place Rod Dots into the mold as shown.



4. Fold the small piece of paper in half, spoon about a half a teaspoon of Yellow Opal Frit into the fold of the paper. Start in the center of each of the sections closest to the center, gently tap the paper to drop the Frit into the mold. Create a mound in the middle.



5. After filling all Yellow sections, use a small brush to spread the Frit to the edges of each section. Then using your folded paper, mound the Frit in the center again.

6. Then use the brush to clean up the unfilled areas, so as not to contaminate the other sections with yellow.

7. Fill the next row of sections with Opal Orange Frit, spreading it to the edges and mounding in the center again.

- Fill, spread and mound the Red Opal.
- Lastly fill the center body section with Black Fine Frit.
- Keep ridges relatively free of color for the moment.



Fill

Spread

Mound

Clean



8. After you have filled all sections with color, mound them again, starting with the lighter colors. If Frit gets on the ridges at this point, don't worry about it.

9. Spread the mounds out so that the colors meet on the ridge.

10. Mound the colors again. It is important to try to keep the colors from mixing and at the same time mound each color as high as possible.



11. Now it is time to clean up the background. Using a small dry brush sweep all Frit into a pile and then sweep it onto a small piece of paper. If you only have a few small pieces of Frit to clean up, use tweezers or a damp brush to pick them up. (If you are too aggressive in sweeping and feel that you should re-apply more Mold E-Z to some areas, go ahead.)



12. Now, let's begin adding background color. Using Medium Clear Frit, gently spoon the Frit in the background area. Begin at the edges and fill to the Frit picture. Try not to disturb the Frit colors in your design. We chose clear so that the butterfly would "float" within the tile.

13a.



13. Filling

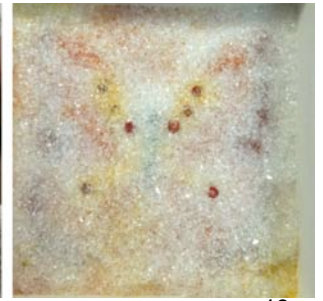
- A) After you fill in the background,
- B) Cover the Frit Picture with the clear.
- C) In order for the background to have the fun streaks of color, lightly sprinkle a little color into the clear as you layer it up.
- D) When you have filled the mold about 1/3 of the way, finish with Clear Frit end with a smooth flat surface.



13a.



13a.



13a.



13b.



13b.



13d.



14. To finish the Frit Picture Mold, gently place a 6" x 6" piece of White System 96 glass, then place and center a 3" x 3" piece and a 1.5" x 1.5". You can sprinkle a little clear or color around the edges too.

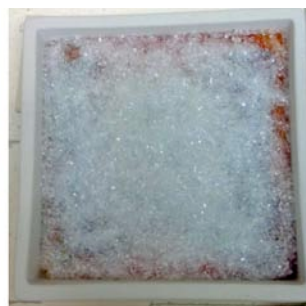
15. Fire the Frit Picture Mold full of Frit to a Full fuse using a slow program. This Butterfly Picture Mold was fired in a Skutt HotStart Pro using the Auto, Slow, Full.

16. When cool, flip out of the Frit Picture Tile and admire your work!



17. All Frit Picture Molds will look great when they come out of the kiln, and can be used just like this. Any rough edges may be ground off at this time.

18. However, for a little extra *oompf*, use a Glassline Black to outline your picture. Fill the "ridges" now grooves. Be sure to sign your work. Let the Picture dry a few hours.



19. Cover the picture with about 1/4" clear Medi Frit. Make sure that it is mounded a bit in the middle.

20. Fire tile in mold in a Skutt HotStart Pro using the Auto, Slow, Full settings.

21. When cool, remove from 6" tile mold and ENJOY!

Frit Picture Mold Butterfly Tile created at The Mad Potter, Lexington, KY by Kim Knig.



3380 E. Jolly Rd.
Lansing, MI 48910
www.DelphiGlass.com
800.248.2048