

# DT26 Sail boat Texture slumped on the GM191 Large S Curve

*Creative Paradise Inc.*

## Materials:

ZYP Glass Separator,

CPI Molds: [DT26](#) and [GM191](#),

COE96 96 Frits; F2: Medium Amber, Teal Green, Deep Aqua Trans, Blue Topaz Trans, Tangerine Trans, Yellow Trans, Turns Pink (Striker), Pale Blue.

COE96 Double thick clear sheet glass, 6.75" x 12.75"

Optional: Fired White Gold, Gold Applicator, Paintbrush, Ear Wax Vacuum, Safety Glasses.



Start by spraying your DT26 mold generously with ZYP glass

Separator spray. Primo primer or another glass separator can be used on the GM191 S Curve.

Image 1



Image 2

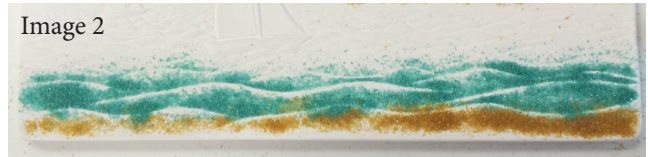
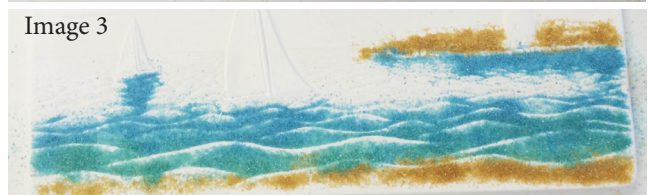


Image 3



Sprinkle some Fine Medium Amber frit onto the beach and the island underneath the light house. Use an ear wax vacuum or a paint brush to gently clean up the areas of the mold where frit has unintentionally strayed. **When using an ear wax vacuum be sure to practice standard safety protocol such as wearing safety glasses to protect your eyes.**

Put some Fine Teal Green frit on to the waves closest to the beach (image 2).

Sprinkle some Fine Deep Aqua frit above the Teal Frit. Carefully place the Deep Aqua frit below the sailboats and light house to create shadows in the waves. Blend some of the Deep Aqua frit into the Teal Green frit. (image 3).

Image 4



Image 5



Place Fine Blue Topaz frit in the remainder of the Ocean and blend it in slightly with the other colored frit as seen in image 4. Clear up any stray frit with a paintbrush or an ear wax vacuum.

Place some Fine Yellow frit on to the mold to create a sunset colored sky line. If desired use a paint brush to sweep away some of the green and blue frit that has already been placed around the sailboat, and in its place sprinkle some Fine Yellow and Fine Tangerine to create a sunset reflection in the Ocean (image 5).



Image 6

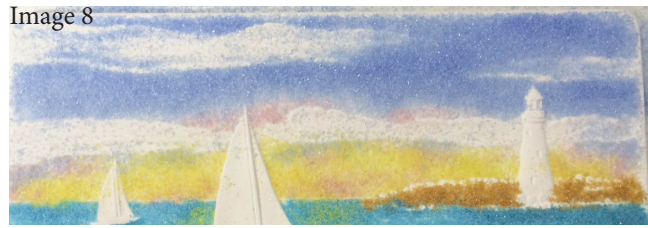


Sprinkle Fine Turns Pink (Striker) frit on to parts of the Tangerine and Yellow frit in the sky, as seen in image 6. Do not put too much Turns Pink as it fuses quite dark.

Image 7



Image 8



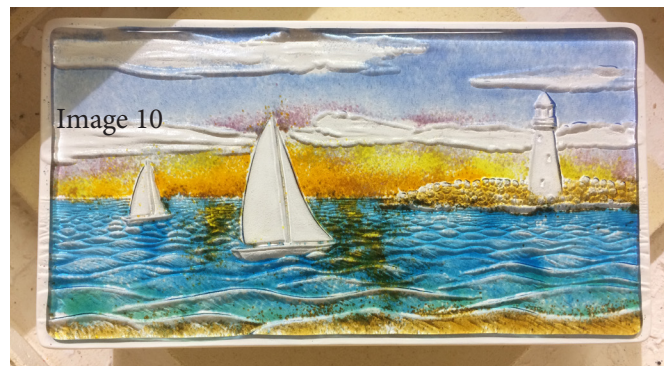
Place Fine Pale Blue frit on to the skyline and down into the sunset area (image 7). Place Fine Light Blue frit on to the top part of the sky (image 8). Use a paint brush to sweep some of the frit out of the clouds in the sky that you want to keep clear. Use an ear wax vacuum to suck up any stray frit.

Image 9



Place one layer of 6.75" x 12.75" double thick clear on top of the frit on the mold (image 9). Fire your piece using the schedule recommended in table 1.

Image 10



Once your piece has been fused (image 10) you can add fired white gold with an applicator to define the sails and the light house and to even add seagulls! As seen in image 11. The gold will mature in the slump firing.

Image 11



When you are ready to slump place the glass on the GM191 mold so that it is parallel with the edge of the mold and is 1/8" over the raised lip of the mold as seen in image 11-12. Slump using the firing schedule in table 2.

Image 12



Table 1 Fuse Schedule *			
Segment	Rate	Temp	Hold
1	250	1215	60
2	50	1250	30
3	275	1465	05
4	9999	950	60
5	100	500	0

Table 2 Slump Schedule *			
Segment	Rate	Temp	Hold
1	250	1100	10
2	275	1230	30
3	9999	950	60
4	100	500	0

\*[Before you fire in your kiln please click here to read our important firing notes.](#)



For more information, molds and tutorials  
please visit our website:

[www.creativeparadiseglass.com](http://www.creativeparadiseglass.com)

*Creative Paradise Inc.*★