

FOLKSY "LOG SLICE" FUSED GLASS ORNAMENTS

Creative Paradise Inc.



Have some fun creating cute woodland critters in the LF165 Log Slice Mold!

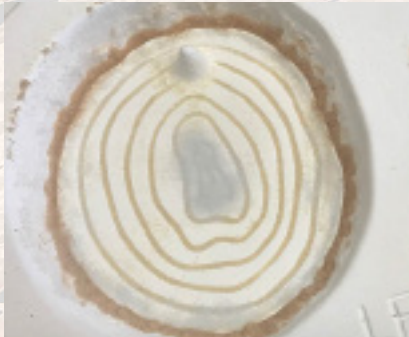


Materials:

- Creative Paradise, Inc. LF165 Log Slice Mold
- ZYP Glass Separator Spray
- An assortment of COE96 and COE90 Powder, Fine and Medium Frits, sheet glass.
- A respirator mask
- A pipette
- Optional: Liquid Fired Gold

Below you will find step by step techniques and patterns needed to make the Birch Tree and Fox log slices as well as suggestions on how to create the other ornaments pictured in the image above!

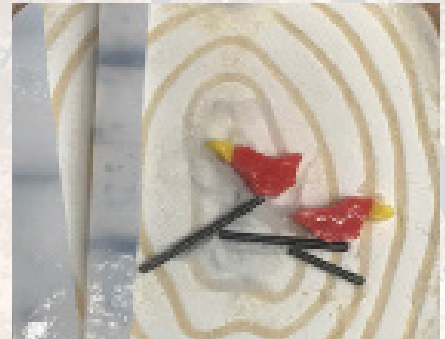
COE96 Birch Tree Log Slice



Sift powdered Medium Amber in creases, a bit of powdered Pale Gray in the center and in outer ring. Sift Powdered Chestnut opal in the ridge of the bark.



Cut two thin strips of Mardi Gras White with Black Streamers/Bits with the streamers going across the strips horizontally. Place the glass with the black bits facing down in the mold. Break parts of black stringers and arrange them as branches.



Use a mosaic nipper and nip bird shaped pieces of Red Opal and small bits of Yellow Opal as beaks. Arrange these pieces on the black stringers in the mold.



Sift a light coating of Pale Amber powder all over and place a mound of fine Ivory in the center area of the cavity over the birds and part of the trees.



Fill the bark area with fine Chestnut Opal and fine Champagne Opal over the entire scene in the bottom of the mold.



Fill the cavity with medium grain Clear until the cavity holds 78 grams. Fire the project to a full fuse. A suggested firing schedule can be found in Table 1.

COE96 Fox Log Slice



Sift powder Bronze in the mold cavity. Use a finger to gently sweep the Bronze into the wood creases. Place powder Pewter Opal frit in the bark crease.

Use a pipette or other delivery device to place powder Terracotta frit in the shape of the foxes ears, nose and forehead. Use a mosaic nipper to nip two small section of Black rod. Place one of the rod pieces at the end of the nose. Nip one of the rod sections in two and use the two pieces as eyes.



Place powder Ivory frit around the eye and in the cheek and muzzle area.

Sift powder Pale Amber below the face and sift a thin layer Pale Gray powder all over the exposed wood grain in the mold. Fill the bark area with fine Pewter frit and cover the center area of the cavity with fine Cloud frit.

Fill the cavity with medium grain Clear until the mold holds 78 grams of frit and fire to a full fuse. A suggested firing schedule can be found in Table 1.

Small Log Slice fill weights: 60 grams of frit (below).

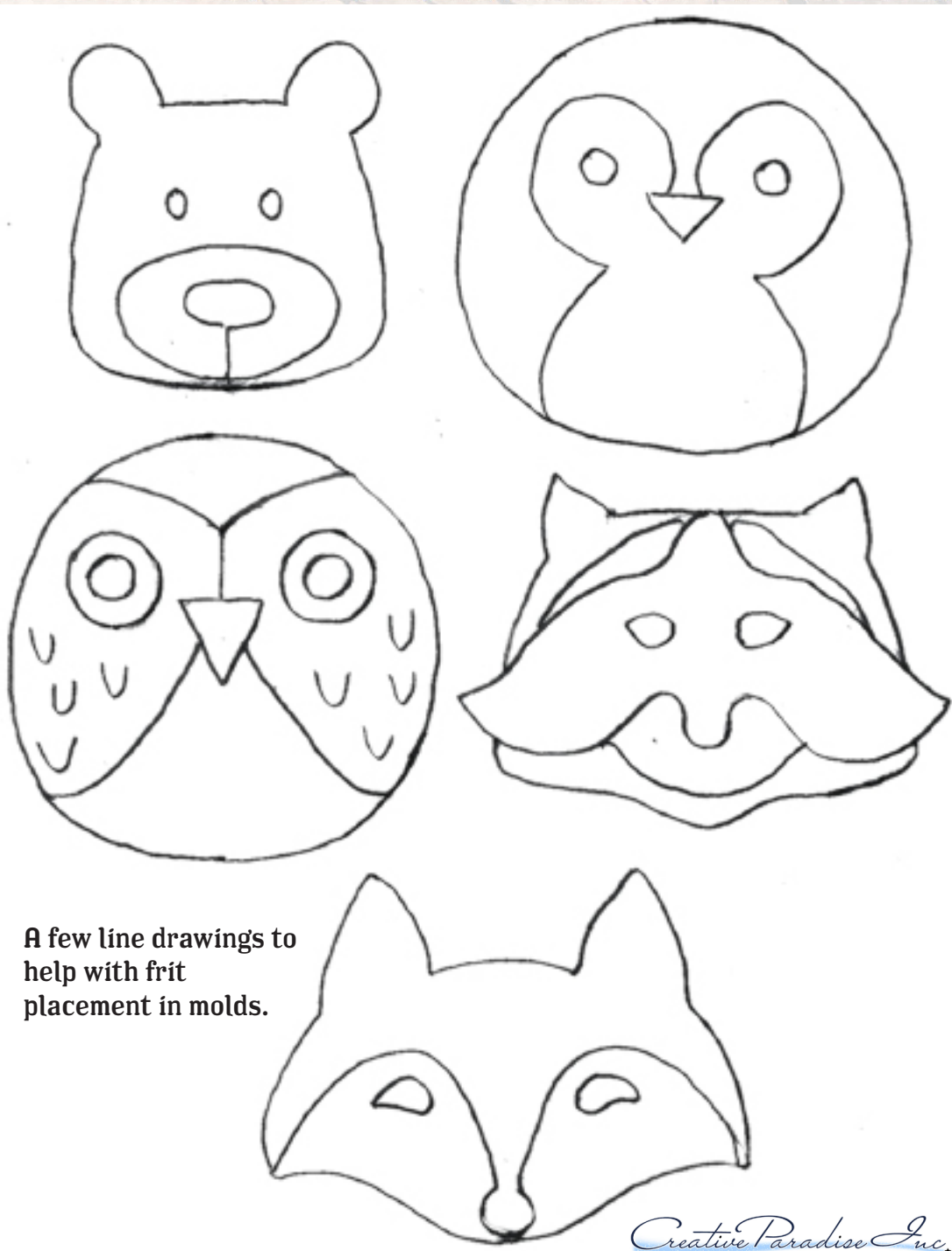


COE 96 Orange Opal nose, Black rod eyes, nips of Black mouth, powder Mauve cheeks, powder White face, powder and fine Chestnut bark, medium Khakiwood.

COE 90 - Powder Light Amber in grain, powder Black eyes, nose, mouth line, fine French Vanilla muzzle, powder Butterscotch head, fine Cream opal wood, fine Woodland Brown bark.

COE 96 - nips of Amazon Green/Dark Green trees, powder Bronze in grain, powder chestnut bark, center line in wood powder Light Purple, wood backed in fine Champagne.

COE 90 - powder Black mask/nose, eyes and around mask powder White, ears and around face powder Butterscotch, wood fine Light Amber/French Vanilla, bark fine Woodland Brown.



A few line drawings to help with frit placement in molds.

Creative Paradise Inc.

Table 1 Fuse*

Segment	Rate	Temp	Hold
1	275	1215	45
2	275	1330	10
3	350	1460	05
4	9999	950	90

[*Before firing in your kiln, please read our important firing notes by clicking here.](#)



COE 96 - Powder medium Amber in grain, ears/top of head/ bark powder Chestnut, nipped Flame nose, nipped Black Rod eyes, Black stringer as antlers. Sift pale amber in wood back with fine and medium Almond.



COE 96 - Powder Bronze in grain and base of belly. Nipped Orange Opal beak, nipped Black rods eyes, Powder Dark Amber wing lines and face outline. White powder around Black rods in eyes and belly. Powder Olive Trans spots on wings and on top of head. Fine Almond backed with medium Clear to fill.

COE 96 - Powder Medium Amber in grain and base of belly. Nipped Orange Opal beak, nipped Black rods eyes, powder black face/head/wings, powder Mauve cheeks, powder White face/body, fine Chestnut in bark, fine Ivory/medium Clear to fill.



Liquid Fired Gold snowflakes and other accents can be added to the fused glass ornaments and matured in a second firing.

Liquid fired gold/white gold consists of actual precious metals in a metallic "overglaze" form and yields the light brilliance of real gold/white gold when fired. They contain 5%-10% real gold and the price of the product will reflect this. They are typically sold in 2 gram containers. A little bit of product goes a long way. Overglaze liquid fired gold can be applied using a brush or for more precise control, use a gold applicator pen. Work in a clean, dust-free area with good ventilation. Clean the glass thoroughly of any oils or glass separator that remains on the surface. To mature the gold/white gold, fire at 350/hour to 1250 degrees with a five minute hold. The overglaze will also mature using a standard slump schedule consequently glass can be slumped and the gold matured in the same firing. Ventilation is crucial because the overglaze has a strong smell before and during firing. For more information contact the manufacturer.



The image above shows the liquid gold applied to the Fox ornament before firing.



Creative Paradise Inc.

For more info email us at creativeparadiseinc@live.com
or visit our website at
www.creativeparadiseglass.com